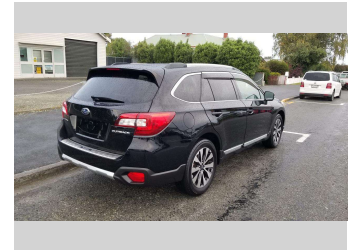
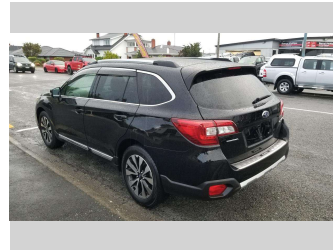
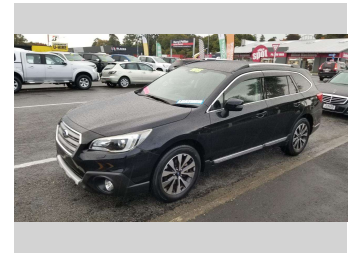


2015 Subaru Outback LIMITED EYESIGHT



Darryl Phillips
MOTOR COMPANY
Ph. 03 308 2441 M. 027 275 8617 www.darrylphillips.co.nz


- Trade ins are welcome**
Easy straight forward process
- Easy & Fast Finance**
Quick & Affordable
- Car Insurance**
Comprehensive, easy & simple
- Extended Warranties**
Coverage for up to 5 years




Purchase Price
Includes GST, Registration & Licensing

\$22,995

Finance may be available on this vehicle. Ask one of our friendly staff for more information.



Gain peace of mind with Mechanical Breakdown Insurance. **Ask us how.**



- Top features**
- » ABS Brakes
 - » Air Bag(s)
 - » Air Conditioning
 - » All Wheel Drive
 - » Alloys
 - » Bluetooth
 - » Central Locking
 - » Climate Control
 - » Cruise Control
 - » EFI
 - » Electric Mirrors
 - » Electric Windows
 - » ESC
 - » Fog Lights
 - » Heated Seats
 - » Immobiliser
 - » Leather Seats
 - » Overdrive

Body Style
5 door, Station Wagon

Odometer
63,000 km

Engine
2500 cc

Fuel Type
Petrol


Transmission
Automatic

Wheels
-

VIN
7AT0GF16X24004571

Interior
Charcoal

Safety



Based on 2023 UCSR rating for 14-20 models

Reg No.
-

Ext Colour
Black

History
-

Seats
5 seats

CO2 Emissions
★★★★☆
179 grams/km

Energy Economy
★★☆☆☆
Annual fuel cost of \$2,980
7.6L per 100km

Cost per year is an estimate based on petrol price of \$2.80 per litre and an average distance of 14000 km. Emissions and Energy Economy figures standardised to 3P WLTP.

Stock ID: 18824

Darryl Phillips
MOTOR COMPANY

Darryl Phillips Motor Company | Phone 03 3082441 | Email terence@dpmc.co.nz
600 East Street, Ashburton 7700, New Zealand
www.darrylphillips.co.nz