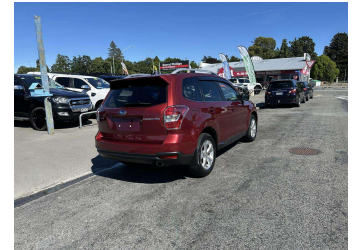
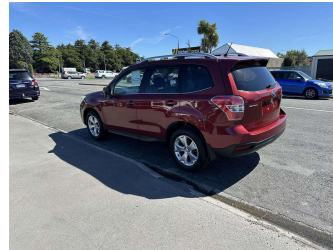
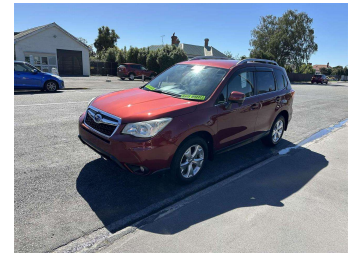


2013 Subaru Forester 2.0i-L Eyesight 4WD



Darryl Phillips
MOTOR COMPANY
Ph. 03 308 2441 M. 027 275 8617 www.darrylphillips.co.nz

- Trade ins are welcome**
Easy straight forward process
- Easy & Fast Finance**
Quick & Affordable
- Car Insurance**
Comprehensive, easy & Simple
- Extended Warranties**
Coverage for up to 5 years



Purchase Price
Includes GST, Registration & Licensing

\$15,995

Finance may be available on this vehicle. Ask one of our friendly staff for more information.

Gain peace of mind with Mechanical Breakdown Insurance. **Ask us how.**

Top features

- » 4WD
- » ABS Brakes
- » Air Bag(s)
- » Air Conditioning
- » Alloys
- » Central Locking
- » Climate Control
- » EFI
- » Electric Mirrors
- » Electric Windows
- » Fog Lights
- » Immobiliser
- » Overdrive
- » Rear Wiper
- » Smart Key

Body Style
5 door, SUV / 4x4

Odometer
80,000 km

Engine
2000 cc

Fuel Type
Petrol

Transmission
Automatic

Wheels
-

VIN
7AT0GF17X24030735

Interior
Charcoal

Safety



Based on 2024 UCSR rating for 12-18 models

Reg No.

-

Ext Colour
Wine Red

History

-

Seats
5 seats

CO2 Emissions
★★★★☆
173 grams/km

Energy Economy
★★☆☆☆☆

Annual fuel cost of \$2,900
7.4L per 100km

Cost per year is an estimate based on petrol price of \$2.80 per litre and an average distance of 14000 km. Emissions and Energy Economy figures standardised to 3P WLTP.

Stock ID: 19345

Darryl Phillips
MOTOR COMPANY

Darryl Phillips Motor Company | Phone 03 3082441 | Email terence@dpmc.co.nz
600 East Street, Ashburton 7700, New Zealand
www.darrylphillips.co.nz