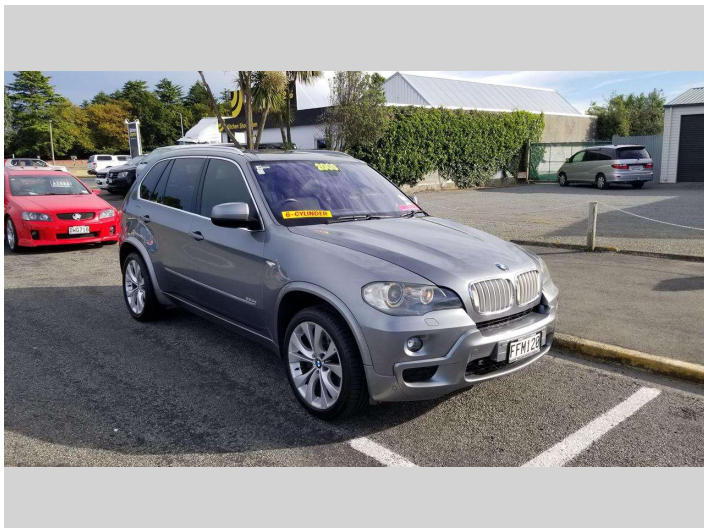
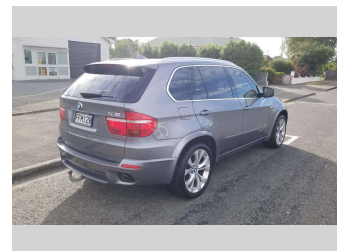
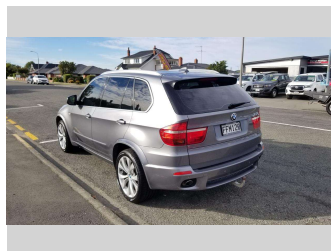


2008 BMW X5 30D



Darryl Phillips
MOTOR COMPANY
Ph. 03 308 2441 M. 027 275 8617 www.darrylphillips.co.nz

- Trade Ins are welcome**
Easy straight forward process
- Easy & Fast Finance**
Quick & Affordable
- Car Insurance**
Comprehensive, easy & Simple
- Extended Warranties**
Coverage for up to 5 years



Purchase Price
Includes GST, Registration & Licensing

\$14,995

Finance may be available on this vehicle. Ask one of our friendly staff for more information.

Gain peace of mind with Mechanical Breakdown Insurance. **Ask us how.**

Top features

- » 4WD
- » ABS Brakes
- » Air Bag(s)
- » Air Conditioning
- » Alloys
- » Central Locking
- » Climate Control
- » Electric Mirrors
- » Heated Seats
- » Immobiliser
- » NZ New
- » Overdrive
- » Power Steering
- » Remote Locking
- » Reversing Camera
- » Turbo Diesel

Body Style
5 door, RV-SUV

Odometer
186,500 km

Engine
3000 cc

Fuel Type
Diesel

Transmission
Automatic

Wheels
-

VIN
WBAFF02070LJ13851

Interior
Charcoal

Safety



Based on 2023 UCSR rating for 07-13 models

Reg No.
FFM120

Ext Colour
Grey

History
-

Seats
5 seats

CO2 Emissions
★☆☆☆☆
268 grams/km

Energy Economy
★☆☆☆☆

Annual fuel cost of \$3,860
10L per 100km

Cost per year is an estimate based on diesel price of \$2.00 per litre and an average distance of 14000 km includes Road User Charges. Emissions and Energy Economy figures standardised to 3P WLTP.

Stock ID: 18660

Darryl Phillips
MOTOR COMPANY

Darryl Phillips Motor Company | Phone 03 3082441 | Email terence@dpmc.co.nz
600 East Street, Ashburton 7700, New Zealand
www.darrylphillips.co.nz