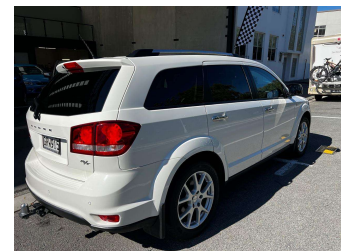
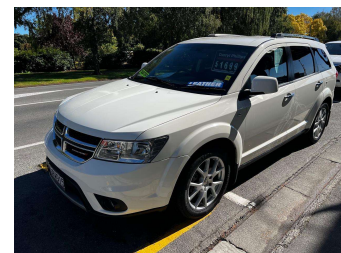


# 2013 Dodge Journey RT




**Darryl Phillips**  
MOTOR COMPANY  
Ph. 03 308 2441 M. 027 275 8617 www.darrylphillips.co.nz

- Trade ins are welcome**  
Easy straight forward process
- Easy & Fast Finance**  
Quick & Affordable
- Car Insurance**  
Comprehensive, easy & simple
- Extended Warranties**  
Coverage for up to 5 years




**Purchase Price** **\$16,995**  
Includes GST, Registration & Licensing

Finance may be available on this vehicle. Ask one of our friendly staff for more information.



Gain peace of mind with Mechanical Breakdown Insurance. **Ask us how.**



**Top features**

- » 7 Seater
- » ABS Brakes
- » Air Bag(s)
- » Air Conditioning
- » Alloys
- » Bluetooth
- » Central Locking
- » Climate Control
- » Cruise Control
- » EFI
- » Electric Mirrors
- » Electric Seats
- » Electric Windows
- » Fog Lights
- » Heated Seats
- » Immobiliser
- » Keyless Entry
- » Leather Seats

Body Style  
**5 door, RV-SUV**

Odometer  
**104,000 km**

Engine  
**3600 cc**

Fuel Type  
**Petrol**

Transmission  
**Automatic**

Wheels  
-

VIN  
**3C4PDCKG2CT386927**

Interior  
**Charcoal**

Safety



Based on 2024 UCSR rating for 08-16 models

Reg No.  
**GRW915**

Ext Colour  
**White**

History  
-

Seats  
**7 seats**

CO2 Emissions  
★☆☆☆☆  
**279 grams/km**

Energy Economy  
★☆☆☆☆

**Annual fuel cost of \$4,550**  
**11.6L per 100km**

Cost per year is an estimate based on petrol price of \$2.80 per litre and an average distance of 14000 km. Emissions and Energy Economy figures standardised to 3P WLTP.

**Stock ID: 19477**



Darryl Phillips Motor Company | Phone 03 3082441 | Email [terence@dpmc.co.nz](mailto:terence@dpmc.co.nz)  
600 East Street, Ashburton 7700, New Zealand  
[www.darrylphillips.co.nz](http://www.darrylphillips.co.nz)