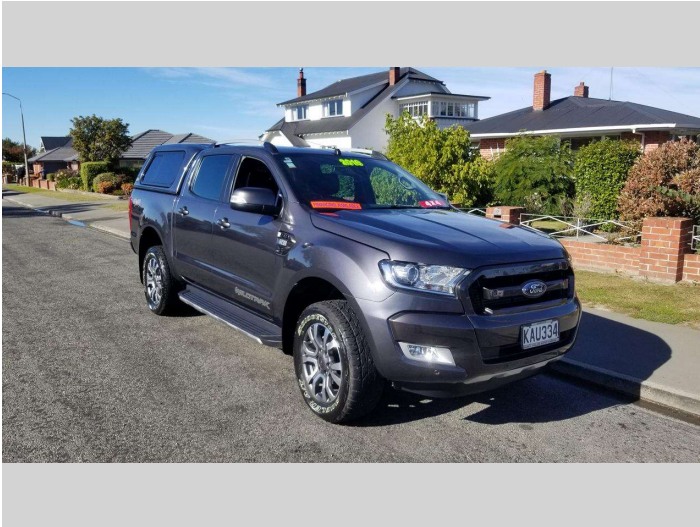
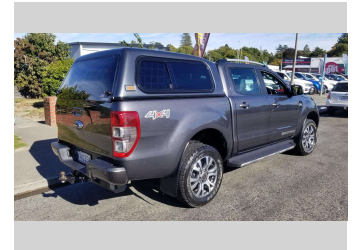
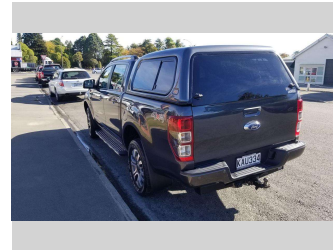
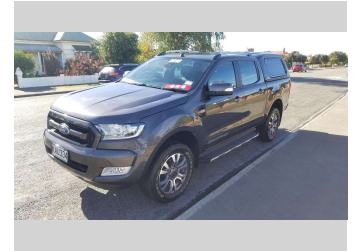


2016 Ford Ranger Wildtrak




Darryl Phillips
MOTOR COMPANY
Ph. 03 308 2441 M. 027 275 8617 www.darrylphillips.co.nz

- Trade ins are welcome**
Easy straight forward process
- Easy & Fast Finance**
Quick & Affordable
- Car Insurance**
Comprehensive, easy & Simple
- Extended Warranties**
Coverage for up to 3 years




Purchase Price **\$41,995**
Includes GST, Registration & Licensing

Finance may be available on this vehicle. Ask one of our friendly staff for more information.



Gain peace of mind with Mechanical Breakdown Insurance. **Ask us how.**



- Top features**
- » 4WD
 - » ABS Brakes
 - » Air Bag(s)
 - » Air Conditioning
 - » Alloys
 - » Bluetooth
 - » Body Kit (Factory)
 - » Canopy
 - » Central Locking
 - » Climate Control
 - » Cruise Control
 - » Electric Mirrors
 - » Electric Seats
 - » Electric Windows
 - » Fog Lights
 - » Immobiliser
 - » NZ GPS
 - » NZ New

Body Style
4 door, Ute

Odometer
99,400 km

Engine
3200 cc

Fuel Type
Diesel


Transmission
Automatic

Wheels
-

VIN
MNAUMFF50GW611434

Interior
Charcoal

Safety



Based on 2023 VSRR rating

Reg No.
KAU334

Ext Colour
Grey

History
-

Seats
5 seats

CO2 Emissions
★☆☆☆☆
269 grams/km

Energy Economy
★☆☆☆☆
Annual fuel cost of \$3,950
10.3L per 100km

Cost per year is an estimate based on diesel price of \$2.00 per litre and an average distance of 14000 km. Includes Road User Charges. Emissions and Energy Economy figures standardised to 3P WLTP.

Stock ID: 18964

Darryl Phillips
MOTOR COMPANY

Darryl Phillips Motor Company | Phone 03 3082441 | Email terence@dpmc.co.nz
600 East Street, Ashburton 7700, New Zealand
www.darrylphillips.co.nz